



GAT MONTHLY MEMBERSHIP PROGRESS REPORT

Results as of: 10/31/2023

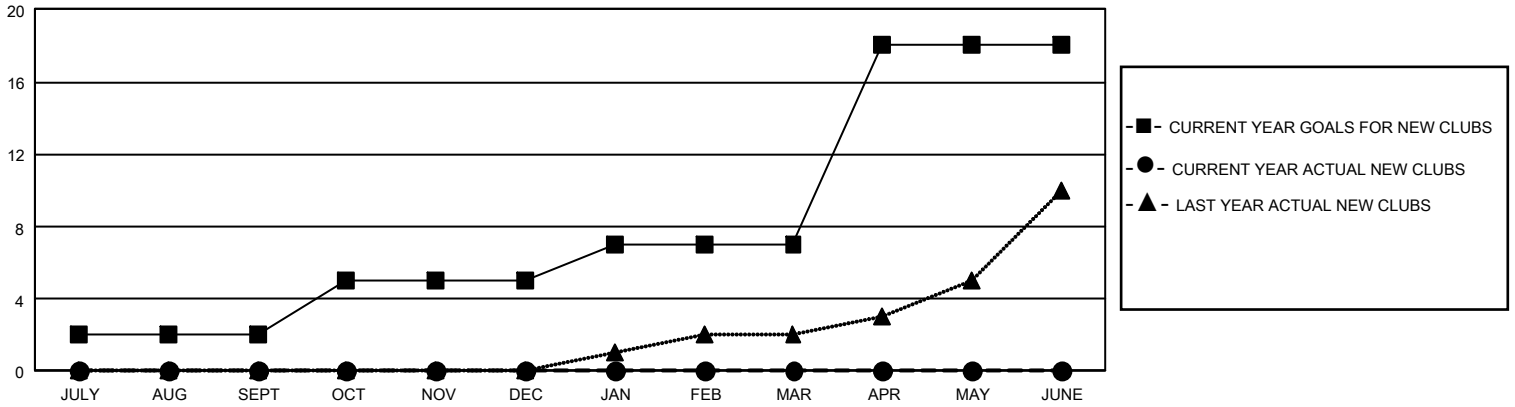
GMT Constitutional Area 4, Group G

REPORT DOES NOT INCLUDE CLUBS IN UNDISTRICTED AREAS.

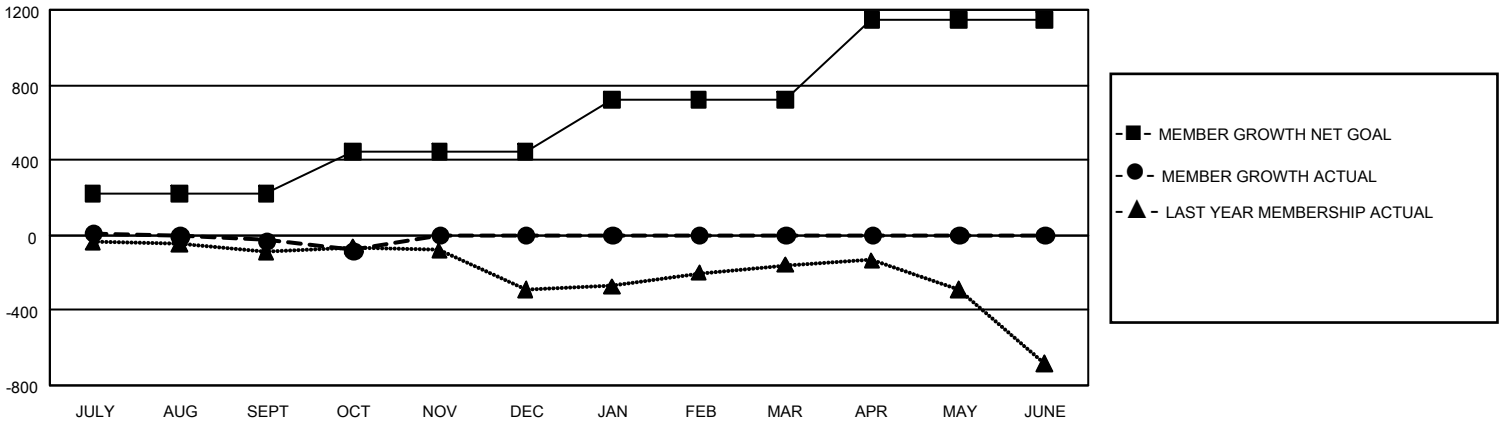
Clubs			
RESULTS FOR 2023-2024			
QUARTER	NEW CLUB GOAL	NEW CLUBS	DROPPED CLUBS
JULY/AUG/SEPT	6	0	7
OCT/NOV/DEC	9	0	0
JAN/FEB/MAR	6	0	0
APR/MAY/JUNE	33	0	0

Members			
RESULTS FOR 2023-2024			
QUARTER	MEMBER GROWTH NET GOAL	MEMBER GROWTH ACTUAL	DROPPED MEMBERS ACTUAL (including transfers)
JULY/AUG/SEPT	222	388	363
OCT/NOV/DEC	223	177	199
JAN/FEB/MAR	277	0	0
APR/MAY/JUNE	423	0	0

GOALS AND ACTUAL NEW CLUBS CUMULATIVE



GOALS AND ACTUAL MEMBERS CUMULATIVE



DROPPED CLUBS: 7	288 CLUBS OF 1,080 ADDED 1 OR MORE NEW MEMBERS	GENDER DISTRIBUTION	
		MALE 16,506 (76.50%) FEMALE 5,068 (23.49%) NON BINARY 1 (0.00%) PREFER NOT TO ANSWER 1 (0.00%)	
DROPPED MEMBERS		CLICK HERE FOR CUMULATIVE MEMBERSHIP DATA	TOTAL FAMILY UNIT MEMBERS 1,399
DECEASED 69 CLUB CANCELLED 0 OTHER 494 TOTAL 563			FAMILY MEMBERS PAYING HALF DUES 712